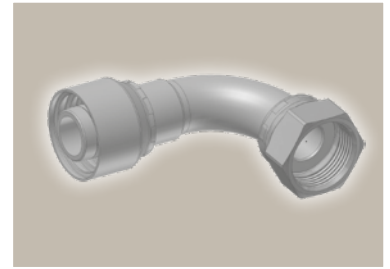
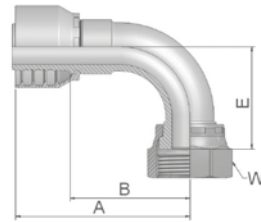


J9

ORFS mit Überwurfmutter 90° Bogen

ISO 12151-1 – SWES
SAE J516 – ORFS 90°



Bestell-Nr.		Schlauch ID				Gewinde	A	B	E	W
Serie 46	Serie 48	DN	Zoll	Size	mm	UNF	mm	mm	mm	mm
1J946-4-4	1J948-4-4	6	1/4	-4	6,4	9/16x18	52	29	21	17
1J946-6-4	1J948-6-4	6	1/4	-4	6,4	11/16x16	51	27	23	22
	1J948-8-4	6	1/4	-4	6,4	13/16x16	50	26	29	24
1J946-6-5	1J948-6-5	8	5/16	-5	7,9	11/16x16	53	29	23	22
1J946-4-6	1J948-4-6	10	3/8	-6	9,5	9/16x18	47	24	21	17
1J946-6-6	1J948-6-6	10	3/8	-6	9,5	11/16x16	52	29	23	22
1J946-8-6	1J948-8-6	10	3/8	-6	9,5	13/16x16	53	30	29	24
1J946-6-8	1J948-6-8	12	1/2	-8	12,7	11/16x16	53	29	23	22
1J946-8-8	1J948-8-8	12	1/2	-8	12,7	13/16x16	55	32	29	24
1J946-10-8	1J948-10-8	12	1/2	-8	12,7	1x14	66	42	32	30
1J946-12-8	1J948-12-8	12	1/2	-8	12,7	1 3/16x12	58	34	48	36
1J946-10-10	1J948-10-10	16	5/8	-10	15,9	1x14	65	39	32	30
1J946-12-10	1J948-12-10	16	5/8	-10	15,9	1 3/16x12	71	45	48	36
1J946-10-12	1J948-10-12	19	3/4	-12	19,1	1x14	69	43	32	30
1J946-12-12	1J948-12-12	19	3/4	-12	19,1	1 3/16x12	80	54	48	36
1J946-16-12		19	3/4	-12	19,1	1 7/16x12	88	62	56	41
1J946-12-16		25	1	-16	25,4	1 3/16x12	88	58	48	36
	1J948-12-16	25	1	-16	25,4	1 3/16 12	88	58	48	36
1J946-16-16	1J948-16-16	25	1	-16	25,4	1 7/16x12	98	68	56	41
1J946-20-16	1J948-20-16	25	1	-16	25,4	1 11/16x12	104	74	64	50
1J946-20-20		31	1 1/4	-20	31,8	1 11/16x12	124	86	64	50
	1J948-20-20	31	1 1/4	-20	31,8	1 11/16x12	129	82	64	50
	1J948-24-24	38	1 1/2	-24	38,1	2x12	140	102	82	60

Serie 46/48

Geprüfte **Armaturenserien** für Schlauchtypen, je nach size:

Auch in Edelstahl erhältlich. Details siehe CAT 4400.1/DE

46 oder 48	441	461LT	462	462TC	462ST	629PU	692PU Twin										
46	463	492	492ST	492TC	692	692Twin	692TC	BCH1									
48	301SN	304	387	387ST	387TC	421RH	421SN	426	421TC	436	441RH	462PU	462PU Twin	BCH2	HT2	...	
	471TC	477	477ST	477TC	477RH	487	487ST	487TC	493	787	787TC	787ST	797	797TC	797ST	811	881