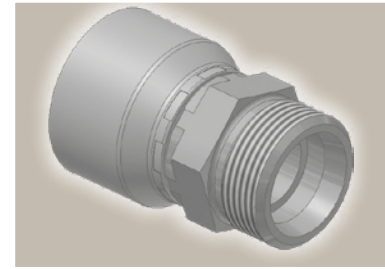
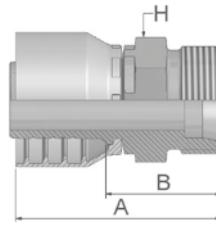


D2 Gewindezapfen schwere Reihe

ISO 12151-2-S-S – CES



| Bestell-Nr. | | Schlauch ID | | | | Gewinde | Rohr | A | B | H |
|-------------|-------------|-------------|-------|------|------|----------|----------|----|----|----|
| Serie 46 | Serie 48 | DN | Zoll | Size | mm | metrisch | AD mm | mm | mm | mm |
| 1D246-6-4 | 1D248-6-4 | 6 | 1/4 | -4 | 6,4 | M14x1,5 | 6 | 48 | 24 | 14 |
| 1D246-8-4 | 1D248-8-4 | 6 | 1/4 | -4 | 6,4 | M16x1,5 | 8 | 48 | 24 | 17 |
| 1D246-10-4 | 1D248-10-4 | 6 | 1/4 | -4 | 6,4 | M18x1,5 | 10 | 50 | 26 | 19 |
| 1D246-12-4 | 1D248-12-4 | 6 | 1/4 | -4 | 6,4 | M20x1,5 | 12 | 48 | 26 | 22 |
| 1D246-8-5 | 1D248-8-5 | 8 | 5/16 | -5 | 7,9 | M16x1,5 | 8 | 48 | 24 | 17 |
| 1D246-10-5 | 1D248-10-5 | 8 | 5/16 | -5 | 7,9 | M18x1,5 | 10 | 50 | 26 | 19 |
| 1D246-12-5 | 1D248-12-5 | 8 | 5/16 | -5 | 7,9 | M20x1,5 | 12 | 50 | 26 | 22 |
| 1D246-14-5 | 1D248-14-5 | 8 | 5/16 | -5 | 7,9 | M22x1,5 | 14 | 51 | 28 | 22 |
| | 1D248-16-5 | 8 | 5/16 | -5 | 7,9 | M24x1,5 | 16 | 53 | 29 | 24 |
| 1D246-10-6 | 1D248-10-6 | 10 | 3/8 | -6 | 9,5 | M18x1,5 | 10 | 50 | 27 | 19 |
| 1D246-12-6 | 1D248-12-6 | 10 | 3/8 | -6 | 9,5 | M20x1,5 | 12 | 49 | 26 | 22 |
| 1D246-14-6 | 1D248-14-6 | 10 | 3/8 | -6 | 9,5 | M22x1,5 | 14 | 51 | 28 | 22 |
| 1D246-12-8 | 1D248-12-8 | 12 | 1/2 | -8 | 12,7 | M20x1,5 | 12 | 49 | 26 | 22 |
| | 1D248-14-8 | 12 | 1/2 | -8 | 12,7 | M22x1,5 | 14 | 52 | 28 | 22 |
| 1D246-16-8 | 1D248-16-8 | 12 | 1/2 | -8 | 12,7 | M24x1,5 | 16 | 52 | 29 | 24 |
| | 1D248-20-8 | 12 | 1/2 | -8 | 12,7 | M30x2 | 20 | 58 | 35 | 30 |
| 1D246-16-10 | 1D248-16-10 | 16 | 5/8 | -10 | 15,9 | M24x1,5 | 16 | 58 | 30 | 24 |
| 1D246-20-10 | 1D248-20-10 | 16 | 5/8 | -10 | 15,9 | M30x2 | 20 | 58 | 32 | 30 |
| | 1D248-16-12 | 19 | 3/4 | -12 | 19,1 | M24x1,5 | 16 | 56 | 31 | 27 |
| 1D246-20-12 | 1D248-20-12 | 19 | 3/4 | -12 | 19,1 | M30x2 | 20 | 61 | 35 | 30 |
| 1D246-25-12 | 1D248-25-12 | 19 | 3/4 | -12 | 19,1 | M36x2 | 25 | 64 | 38 | 36 |
| 1D246-25-16 | 1D248-25-16 | 25 | 1 | -16 | 25,4 | M36x2 | 25 | 68 | 39 | 36 |
| 1D246-30-16 | 1D248-30-16 | 25 | 1 | -16 | 25,4 | M42x2 | 30 | 71 | 42 | 46 |
| 1D246-38-20 | | 31 | 1 1/4 | -20 | 31,8 | M52x2 | 38 | 84 | 46 | 55 |
| | 1D248-38-20 | 31 | 1 1/4 | -20 | 31,8 | M52x2 | 38 | 91 | 44 | 55 |
| | 1D248-38-24 | 38 | 1 1/2 | -24 | 38,1 | M52x2 | 38 | 84 | 46 | 55 |

Geprüfte **Armaturenserien** für **Schlauchtypen**, je nach size:

Auch in Edelstahl erhältlich. Details siehe CAT 4400.1/DE

| | | | | | | | | | | | | | | | | | |
|--------------------------|-------|-------|-------|-------|-------|---------|------------|-------|-------|-----|-------|-------|------------|-------|-------|-----|-----|
| 46 oder 48 | 441 | 461LT | 462 | 462TC | 462ST | 629PU | 692PU Twin | | | | | | | | | | |
| 46 | 463 | 492 | 492ST | 492TC | 692 | 692Twin | 692TC | BCH1 | | | | | | | | | |
| 48 | 301SN | 304 | 387 | 387ST | 387TC | 421RH | 421SN | 426 | 421TC | 436 | 441RH | 462PU | 462PU Twin | BCH2 | HT2 | ... | |
| | 471TC | 477 | 477ST | 477TC | 477RH | 487 | 487ST | 487TC | 493 | 787 | 787TC | 787ST | 797 | 797TC | 797ST | 811 | 881 |