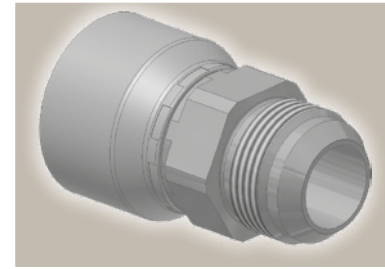
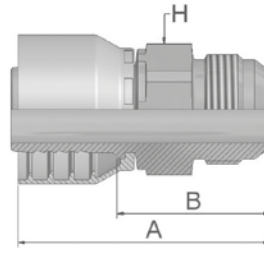


03 Gewindezapfen SAE (JIC) 37° ISO12151-5-S – AGJ



| Bestell-Nr. | | Schlauch ID | | | | Gewinde | A | B | H |
|-------------|-------------|-------------|-------|------|------|-----------|-----|----|----|
| Serie 46 | Serie 48 | DN | Zoll | Size | mm | UNF | mm | mm | mm |
| 10346-4-4 | 10348-4-4 | 6 | 1/4 | -4 | 6,4 | 7/16x20 | 52 | 29 | 14 |
| 10346-5-4 | 10348-5-4 | 6 | 1/4 | -4 | 6,4 | 1/2x20 | 52 | 29 | 14 |
| 10346-6-4 | 10348-6-4 | 6 | 1/4 | -4 | 6,4 | 9/16x18 | 55 | 31 | 19 |
| 10346-5-5 | 10348-5-5 | 8 | 5/16 | -5 | 7,9 | 1/2x20 | 50 | 26 | 14 |
| 10346-6-5 | 10348-6-5 | 8 | 5/16 | -5 | 7,9 | 9/16x18 | 55 | 31 | 19 |
| 10346-8-5 | 10348-8-5 | 8 | 5/16 | -5 | 7,9 | 3/4x16 | 57 | 33 | 19 |
| 10346-4-6 | 10348-4-6 | 10 | 3/8 | -6 | 9,5 | 7/16x20 | 54 | 31 | 19 |
| 10346-5-6 | 10348-5-6 | 10 | 3/8 | -6 | 9,5 | 1/2x20 | 53 | 30 | 19 |
| 10346-6-6 | 10348-6-6 | 10 | 3/8 | -6 | 9,5 | 9/16x18 | 56 | 31 | 19 |
| 10346-8-6 | 10348-8-6 | 10 | 3/8 | -6 | 9,5 | 3/4x16 | 53 | 30 | 22 |
| 10346-10-6 | 10348-10-6 | 10 | 3/8 | -6 | 9,5 | 7/8x14 | 56 | 33 | 24 |
| 10346-8-8 | 10348-8-8 | 12 | 1/2 | -8 | 12,7 | 3/4x16 | 57 | 34 | 22 |
| 10346-10-8 | 10348-10-8 | 12 | 1/2 | -8 | 12,7 | 7/8x14 | 56 | 32 | 24 |
| 10346-12-8 | 10348-12-8 | 12 | 1/2 | -8 | 12,7 | 1 1/16x12 | 62 | 38 | 27 |
| 10346-10-10 | 10348-10-10 | 16 | 5/8 | -10 | 15,9 | 7/8x14 | 63 | 38 | 24 |
| 10346-12-10 | 10348-12-10 | 16 | 5/8 | -10 | 15,9 | 1 1/16x12 | 64 | 39 | 27 |
| 10346-12-12 | 10348-12-12 | 19 | 3/4 | -12 | 19,1 | 1 1/16x12 | 68 | 42 | 27 |
| 10346-14-12 | 10348-14-12 | 19 | 3/4 | -12 | 19,1 | 1 3/16x12 | 68 | 42 | 30 |
| 10346-16-12 | 10348-16-12 | 19 | 3/4 | -12 | 19,1 | 1 5/16x12 | 64 | 38 | 36 |
| 10346-16-16 | 10348-16-16 | 25 | 1 | -16 | 25,4 | 1 5/16x12 | 76 | 46 | 36 |
| 10346-20-16 | 10348-20-16 | 25 | 1 | -16 | 25,4 | 1 5/8x12 | 73 | 43 | 46 |
| 10346-20-20 | | 31 | 1 1/4 | -20 | 31,8 | 1 5/8x12 | 86 | 48 | 46 |
| | 10348-20-20 | 31 | 1 1/4 | -20 | 31,8 | 1 5/8x12 | 101 | 53 | 46 |
| | 10348-24-24 | 38 | 1 1/2 | -24 | 38,1 | 1 7/8x12 | 85 | 47 | 50 |
| | 10348-32-32 | 51 | 2 | -32 | 50,8 | 2 1/2x12 | 109 | 61 | 65 |

Geprüfte **Armaturenserien** für **Schlauchtypen**, je nach size:

Auch in Edelstahl erhältlich. Details siehe CAT 4400.1/DE

| | | | | | | | | | | | | | | | | | |
|------------|-------|-------|-------|-------|-------|---------|------------|-------|-------|-----|-------|-------|------------|-------|-------|-----|-----|
| 46 oder 48 | 441 | 461LT | 462 | 462TC | 462ST | 629PU | 692PU Twin | | | | | | | | | | |
| 46 | 463 | 492 | 492ST | 492TC | 692 | 692Twin | 692TC | BCH1 | | | | | | | | | |
| 48 | 301SN | 304 | 387 | 387ST | 387TC | 421RH | 421SN | 426 | 421TC | 436 | 441RH | 462PU | 462PU Twin | BCH2 | HT2 | ... | |
| | 471TC | 477 | 477ST | 477TC | 477RH | 487 | 487ST | 487TC | 493 | 787 | 787TC | 787ST | 797 | 797TC | 797ST | 811 | 881 |