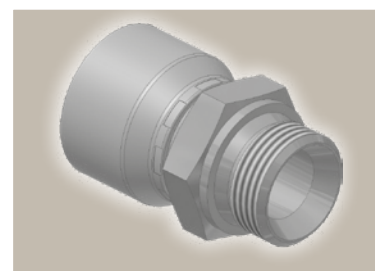
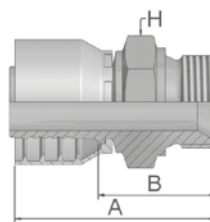


D9

BSP-Einschraubzapfen zylindrisch

BSP5200 – AGR



Bestell-Nr.		Schlauch ID				Gewinde	A	B	H
Serie 46	Serie 48	DN	Zoll	Size	mm	BSP	mm	mm	mm
1D946-2-4	1D948-2-4	6	1/4	-4	6,4	1/8x28	46	22	14
1D946-4-4	1D948-4-4	6	1/4	-4	6,4	1/4x19	51	27	19
1D946-6-4	1D948-6-4	6	1/4	-4	6,4	3/8x19	53	31	22
1D946-8-4	1D948-8-4	6	1/4	-4	6,4	1/2x14	54	52	27
1D946-4-5		8	5/16	-5	7,9	1/4x19	50	27	19
	1D948-4-5	8	5/16	-5	7,9	1/4x19	49	27	19
1D946-6-5	1D948-6-5	8	5/16	-5	7,9	3/8x19	55	31	22
1D946-4-6		10	3/8	-6	9,5	1/4x19	49	27	19
	1D948-4-6	10	3/8	-6	9,5	1/4x19	50	27	19
1D946-6-6	1D948-6-6	10	3/8	-6	9,5	3/8x19	54	31	22
1D946-8-6	1D948-8-6	10	3/8	-6	9,5	1/2x14	56	33	27
1D946-6-8	1D948-6-8	12	1/2	-8	12,7	3/8x19	54	30	22
1D946-8-8	1D948-8-8	12	1/2	-8	12,7	1/2x14	57	33	27
1D946-10-8	1D948-10-8	12	1/2	-8	12,7	5/8x14	58	35	30
1D946-12-8	1D948-12-8	12	1/2	-8	12,7	3/4x14	60	36	32
1D946-8-10	1D948-8-10	16	5/8	-10	15,9	1/2x14	58	33	27
1D946-10-10	1D948-10-10	16	5/8	-10	15,9	5/8x14	60	35	30
1D946-12-10	1D948-12-10	16	5/8	-10	15,9	3/4x14	62	37	32
1D946-12-12	1D948-12-12	19	3/4	-12	19,1	3/4x14	62	36	32
1D946-16-12	1D948-16-12	19	3/4	-12	19,1	1x11	67	41	41
1D946-16-16	1D948-16-16	25	1	-16	25,4	1x11	72	42	41
	1D948-20-16	25	1	-16	25,4	1 1/4x11	75	46	50
1D946-20-20		31	1 1/4	-20	31,8	1 1/4x11	85	47	50
	1D948-20-20	31	1 1/4	-20	31,8	1 1/4x11	92	45	50
	1D948-24-24	38	1 1/2	-24	38,1	1 1/2x11	87	49	60
	1D948-32-32	51	2	-32	50,8	2x11	102	54	70

Serie 46/48

Geprüfte **Armaturenserien** für Schlauchtypen, je nach size:

Auch in Edelstahl erhältlich. Details siehe CAT 4400.1/DE

46 oder 48	441	461LT	462	462TC	462ST	629PU	692PU Twin										
46	463	492	492ST	492TC	692	692Twin	692TC	BCH1									
48	301SN	304	387	387ST	387TC	421RH	421SN	426	421TC	436	441RH	462PU	462PU Twin	BCH2	HT2	...	
	471TC	477	477ST	477TC	477RH	487	487ST	487TC	493	787	787TC	787ST	797	797TC	797ST	811	881