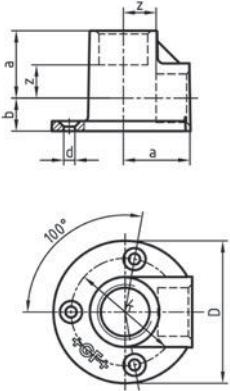




471 Deckenwinkel

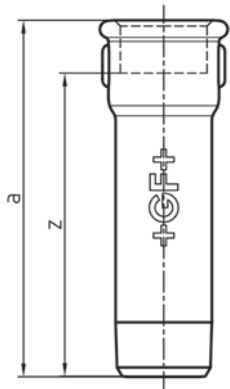


EN	S/V	Dim. [inch]	Code	a [mm]	b [mm]	d [mm]	z [mm]	k [mm]	D [mm]
-	V	3/8	770 471 203	25	12	4,5	15	41,5	60
-	V	1/2	770 471 204	28	14	5,5	15	44,5	62
-	V	3/4	770 471 205	33	17	5,5	18	53,5	70



526 Verlängerung

• * Aufgrund der Baulänge KEINE normgerechte Gewindelänge.



EN	S/V	Dim. [inch]	Länge [mm]	Code	a [mm]	z [mm]
-	S	3/8	100	770 526 119	100	90
-	V	3/8	100	770 526 219	100	90
*	S	1/2	30	770 526 120	30	17
*	V	1/2	30	770 526 220	30	17
-	S	1/2	50	770 526 121	50	37
-	V	1/2	50	770 526 221	50	37
-	S	1/2	60	770 526 122	60	47
-	V	1/2	60	770 526 222	60	47
-	S	1/2	70	770 526 123	70	57
-	V	1/2	70	770 526 223	70	57
-	S	1/2	80	770 526 124	80	67
-	V	1/2	80	770 526 224	80	67
-	S	1/2	100	770 526 125	100	87
-	V	1/2	100	770 526 225	100	87
-	S	1/2	120	770 526 126	120	107
-	V	1/2	120	770 526 226	120	107
*	S	3/4	30	770 526 127	30	15
*	V	3/4	30	770 526 227	30	15
*	S	3/4	40	770 526 128	40	25
*	V	3/4	40	770 526 228	40	25
-	S	3/4	60	770 526 129	60	45
-	V	3/4	60	770 526 229	60	45
-	S	3/4	70	770 526 130	70	55
-	V	3/4	70	770 526 230	70	55
-	S	3/4	80	770 526 131	80	65
-	V	3/4	80	770 526 231	80	65
-	S	3/4	100	770 526 132	100	85
-	V	3/4	100	770 526 232	100	85
*	S	1	40	770 526 133	40	23
*	V	1	40	770 526 233	40	23
-	S	1	80	770 526 134	80	63
-	V	1	80	770 526 234	80	63
-	S	1	100	770 526 135	100	83
-	V	1	100	770 526 235	100	83